

The *CineMonitor*HD family sets a new standard of excellence in HD monitoring. Featuring Transvideo's proprietary technology with RealFrameRate processing (RFR™), it provides true monitoring of existing in-camera images with 1-frame delay or less. Transvideo's processing technology displays crystal clear images without aliasing or motion-blurs. Transvideo *CineMonitor*HD accept HD/SD SDI, Composite, HD/SD YPrPb, and HD/SD RGB with automatic recognition of all SDI standards. With a very friendly user interface, intuitive menu and direct access keys, the Operator's attention remains on the image rather than on the equipment. The *CineMonitor*HD family offers a common user interface making it easy to go from one model to the next. Sizes currently range from 6" to 15".

The *CineMonitor*HD can be set in 2 operating modes either for outdoor viewing or color monitoring. The SuperBright models are designed to be used in full sun without hood while maintaining details in both the dark areas and highlights. In Calibrated mode, the larger *CineMonitor*HD become color reference monitors comparable to CRTs. Basic monitors include the necessary functions for HD monitoring: 16/9, Anamorphic, (and 4:3 in SD), Fixed markers (TV safe, 4:3 and 14/9), Blue check, Colorimetry & Gamma Adjustments, Luminance Waveform with user-programmable clipping levels, Display Mode (Color, Green Screen or Black & White), Zoom and Reframe, Image Flips & Monitor Reverse, Tally, User-programmable Memories, User-Adjustable menu scrolling direction and menu auto-exit speed, as well as Lock function to prevent accidental changes.

Non-essential functions are optional: Full color Frameline & Matting Generator, RGB Waveform, Vectorscope, Histogram, Exposure control and Virtual Horizon. All functions operate both in HD and SD.

Transvideo *CineMonitor*HD reach new heights in manufacturing quality with precision machined aluminum housings fully sealed (no holes or noisy fans), state of the art optical glass protecting the screen and galvanic insulation.

Common Specifications

MAIN APPLICATIONS

Standard	HD 720p, 1080p & i SD Pal Secam NTSC
Display Mode	Color, B&W, Green
Display	AMLCD RGB Stripe
Power	10 - 36 VDC with Galvanic Insulation
Power connector	XLR4 -1, +4
Operating Temp	-20°C +55°C
Storage Temp	-40°C +80°C

- Digital Cinematography
- Broadcast
- Hi-Speed Digital Video
- Body-rigs
- Helicopter (SB versions)
- Harsh environment

CineMonitor^{HD} family

4:3
16:9
2.35:1

Real
Frame
Rate™

Latency
<1Frame

Auto
Reverse+
H&V Flips

ZOOM

Blue
Check

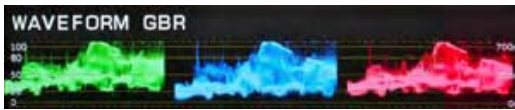
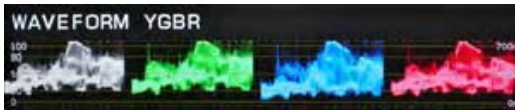
D56 - D65
Manual color
calibration

Adjustable
Gamma

TALLY

Safe area
markers

Waveform
Vectorscope
Histogram



Line Waveform

Shows a line representation of the picture. Y, R, G or B component. Possibility to select "All lines", 12 lines or 1 specific line.

Parade Mode Waveform

Shows a multiple lines representation of RGB, GBR, YRGB, YGBR and YPrPb.

Frame Waveform

Shows a frame representation of the picture.

Exposure
Monitoring

Color
Framelines
+Matting

Virtual
Horizon



Histogram

Shows a multiple lines a statistic representation of the luminance.



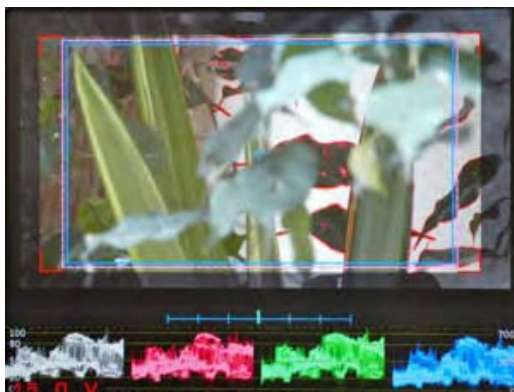
Vectorscope

Shows a representation of the color vectors. 75% and 100% scales. Usable to adjust cameras, black level and color space.



Focus Helper

Based on a high performance multi dimensional digital filter, a Focus Helper offering 10 levels and 8 colors helps to have a sharp focus in difficult situations.



Frameline Generator

3 user-adjustable framelines (9 colors, solid line, dots, dashes, corners), with or without crosshair, with or without matting (4 solid color + 4 shades of see-through greys).

Virtual Horizon

Color coded electronic leveller with several renditions, adjustable sensitivity and direction. The leveller reacts to a sensor built-in the CineMonitorHD or to an external sensor (as the Betz Horizon). Operates both in HD and Standard Def.

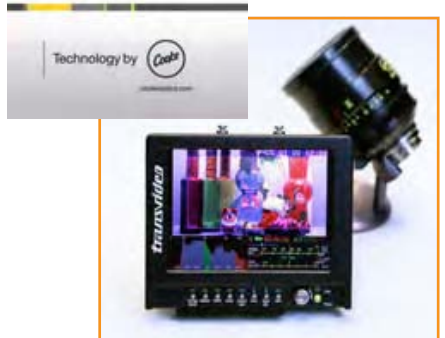
CineMonitor^{HD} family

Multiformat HD



CineMonitor^{HD} SBL Evolution

Not a simple monitor but a complete and comprehensible tool set for everyone on the set from the Assistant to the DP.



Firmware and software updates are possible on the CineMonitor^{HD} Evolution by the user with a USB key and a USB cable.

CineMonitor^{HD} SBL evolution

SuperBright model with the latest LED backlight technology outputing over 1000Nits for full sun operation with a low power consumption.

Viewing angles are optimized for body-rig operation.

Full color Frameline & Matting Generator, Y+RGB Waveform, Vectorscope, Histogram.

HDMI optimized for DSLRs use.

1000Nits



HDMI Input



Ordering Codes

- 917TS0047 CineMonitor^{HD} SBL
- 917TS0048 CineMonitor^{HD} SBL SDI only
- 917TS0018 HD/SD Virtual Horizon
- 918TS0135 Sun & Night Hood
- 918TS0158 Sun & Night Hood with extension
- 918TS0161 Light Hood with 6 Pin M4
- 918TS0136 Raincover
- 918TS0137-V Battery Back (Standard V-Lock)
- 918TS0137-A Battery Back (Anton-Bauer)
- 918TS0151 Carbon Handle
- 918TS0127 Slide Ass'y with 1/4-20 nut

Specifications

Inputs	1 x HD/SD SDI + 1 Rck out 1 x CVBS (PAL/NTSC)+Loop 1 x Multi (YPrPb / RGB) 1 x HDMI (or 2 x HD/SD SDI + 1 Rck out)
Contrast ratio	Max 600:1
Viewing angle	±80°H, +60°/-80°V
Brightness	1000 Nits
Dimensions	Depth 58 mm/2.3" Width 195 mm/7.7" Height 160 mm/6.3"
Weight	1275 grams
Power Cons.	14.5W



Jorg Widmer - Wim Wenders

CineMonitor^{HD} Evolution

CineMonitor^{HD} evolution

Wide viewing angles and color gamut make the CineMonitor^{HD} ideal for studio use with high end digital cameras.

Full color Frameline & Matting Generator, Y+RGB Waveform, Vectorscope, Histogram.

HDMI optimized for DSLRs use.

A proprietary locking system for the HDMI cable secures the link and the connectors. (Patent pending)



HDMI Input



Ordering Codes

- 917TS0049 CineMonitor^{HD}
- 917TS0050 CineMonitor^{HD} SDI only
- 917TS0018 HD/SD Virtual Horizon
- 918TS0142 Sun & Night Hood
- 918TS0159 Sun & Night Hood with extension
- 918TS0150 Light Hood with 6 Pin M4
- 918TS0141 Raincover
- 918TS0137-V Battery Back (Standard V-Lock)
- 918TS0137-A Battery Back (Anton-Bauer)
- 918TS0151 Carbon Handle
- 918TS0127 Slide Ass'y with 1/4-20 nut
- 918TS0184 19" rackmount for 2 8" monitors

Specifications

Inputs	1 x HD/SD SDI + 1 Rck out 1 x CVBS (PAL / NTSC) + Loop-through. 1 x HDMI 1 x Multi (YPrPb / RGB / CVBS)
Contrast ratio	Max 500:1
Viewing angle	±85°H&V
Brightness	450 Nits
Dimensions	Depth 62 mm/2.44" Width 215 mm/8.46" Height 183 mm/7.20"
Weight	1600 grams
Power Cons.	17.5W



France Television - Thalassa

CineMonitor^{HD} & SBL evolution

Lates generation of SuperBright on-board multiformat monitor this model is equipped with the latest LED backlight technology providing wide color gamut and outputting over 1000Nits for full sun operation with a low power consumption.

Wide viewing angles are optimized for body-rig operation.

Full color Frameline & Matting Generator, Y+RGB Waveform, Vectorscope, Histogram
The CineMonitor^{HD} & SBL has a HDMI input, optimized for DSLR use.



Ordering Codes

- 917TS0068 CineMonitor^{HD} & SBL
- 917TS0069 CineMonitor^{HD} & SBL SDI only
- 917TS0018 HD/SD Virtual Horizon
- 918TS0142 Sun & Night Hood
- 918TS0159 Sun & Night Hood with extension
- 918TS0150 Light Hood with 6 Pin M4
- 918TS0141 Raincover
- 918TS0137-V Battery Back (Standard V-Lock)
- 918TS0137-A Battery Back (Anton-Bauer)
- 918TS0151 Carbon Handle
- 918TS0127 Slide Ass'y with 1/4-20 nut
- 918TS0184 19" rackmount for 2 8" monitors

HDMI Input



Specifications

Inputs	1 x HD/SD SDI + 1 Rck out 1 x CVBS (PAL / NTSC) + Loop-through. 1 x HDMI 1 x Multi (YPrPb / RGB / CVBS)
Contrast ratio	Max 500:1
Viewing angle	±80°H, +60°/-80°V
Brightness	1000 Nits
Dimensions	Depth 62 mm/2.44" Width 215 mm/8.46" Height 183 mm/7.20"
Weight	1600 grams
Power Cons.	16.5 W

1000Nits



Andreas Weeber - Arri CSC

CineMonitor^{HD} Evolution

CineMonitor^{HD} IO SB evolution

SuperBright model with the latest backlight technology outputting over 1000Nits for full sun operation with a low power consumption.

It comes loaded with all the options except the optional Horizon:

Full color Frameline & Matting Generator, Y+RGB Waveform, Vectorscope, Histogram

The CineMonitor^{HD} IO SB is usually configured with analog and SDI HD&SD inputs. They can also be ordered with 2 SDI inputs and 1 reclocked output (no analog inputs).



Ordering Codes

- 917TS0054 CineMonitor^{HD} IO SB
- 917TS0057 CineMonitor^{HD} IO SB SDI only
- 917TS0018 HD/SD Virtual Horizon
- 918TS0151 Carbon Handle
- 918TS0127 Slide Ass'y with 1/4-20 nut

Specifications

Inputs	1 x HD/SD SDI + 1 Rck out 1 x CVBS (PAL / NTSC) + Loop-through. 1 x Multi (YPrPb / RGB / CVBS)
Contrast ratio	Max 600:1
Viewing angle	±80°H, ±65°V
Brightness	1000 Nits
Dimensions	Depth 76 mm/3" Width 268 mm/10.5" Height 226 mm/8.89"
Weight	2659 grams
Power Cons.	30 W

1000Nits



CineMonitorHD on a Technocrane

CineMonitor^{HD} I² SB evolution

The CineMonitor^{HD} I² SB is a medium size field monitor equipped with SuperBright technology. Its backlight outputs over 1000Nits for full sun operation with a low power consumption.

Fully loaded with tools except the optional Horizon, this monitor is ideal for crane operation or as a Director's finder with the optional carbon handles.



Ordering Codes

- 917TS0055 CineMonitor^{HD} I² SB
- 917TS0058 CineMonitor^{HD} I² SB SDI only
- 917TS0018 HD/SD Virtual Horizon
- 918TS0151 Carbon Handle
- 918TS0127 Slide Ass'y with 1/4-20 nut

Specifications

Inputs	1 x HD/SD SDI + 1 Rck out 1 x CVBS (PAL / NTSC) + Loop-through. 1 x Multi (YPrPb / RGB / CVBS)
Contrast ratio	Max 600:1
Viewing angle	±80°H, +60°/-80°V
Brightness	1000 Nits
Dimensions	Depth 70 mm/2.76" Width 297 mm/11.69" Height 255 mm/10.03"
Weight	3500 grams
Power Cons.	32W

1000Nits



CineMonitor^{HD} Evolution

Multiformat HD

CineMonitor^{HD} 15" SBL evolution

The CineMonitor^{HD} 15" SBL is updated with a wide viewing angle display equipped with SuperBright technology. Its LED backlight outputs over 1000Nits for full sun operation with a low power consumption.

Fully loaded with tools except the optional Horizon, this monitor is ideal for crane operation or any outdoor shoot.



New Display
Wide viewing
angle



Ordering Codes

- 917TS0056 CineMonitor^{HD} 15" SBL
- 917TS0059 CineMonitor^{HD} 15" SBL SDI only
- 917TS0018 HD/SD Virtual Horizon
- 918TS0151 Carbon Handle
- 918TS0127 Slide Ass'y with 1/4-20 nut
- 918TS0185 19" rackmount for 15" monitor

Specifications

Inputs	1 x HD/SD SDI + 1 Rck out 1 x CVBS (PAL / NTSC) + Loop-through. 1 x Multi (YPrPb / RGB / CVBS)
Contrast ratio	Max 650:1
Viewing angle	±80°H & V
Brightness	1000 Nits
Dimensions	Depth 65 mm/2.55" Width 343 mm/13.5" Height 303 mm/11.92"
Weight	4850 grams/10.6lbs
Power Cons.	50W

1000Nits



2010 Rugby worldcup

CineMonitor^{HD} 15" Studio evolution

This 15" monitor provides an outstanding HD picture with deep blacks, high contrast and wide gamuts.

It comes loaded with all tools except the optional Horizon:

Full color Frameline & Matting Generator, Y+RGB Waveform, Vectorscope, Histogram.

When monitoring picture quality matters on the field, it is the right product.



Ordering Codes

917TS0060 CineMonitor^{HD} 15" Studio

917TS0018 HD/SD Virtual Horizon

918TS0151 Carbon Handle

918TS0127 Slide Ass'y with 1/4-20 nut

918TS0XXX 19" rackmount for 15" monitor

Specifications

Inputs	1 x HD/SD SDI + 1 Rck out 1 x CVBS (PAL / NTSC) + Loop-through. 1 x Multi (YPrPb / RGB / CVBS)
Contrast ratio	Max 700:1
Viewing angle	±85° H&V
Brightness	350 Nits
Dimensions	Depth 65 mm/2.55" Width 343 mm/13.5" Height 303 mm/11.92"
Weight	4290 grams/9.44lbs
Power Cons.	34W



Bastiaan Houtkooper NSC

CineMonitor HD Evolution Comparison Chart

	6 SBL	8	8 SBL	10 SB	12 SB	15 SBL	15 Studio
Pixels	Picture zone 1024 x 560						
Brightness / Nits	1000	450	1000	1000	1000	1000	350
Viewing angle	H ±80° V ±60° -80°	H ±85° V ±85°	H ±80° V ±65°	H ±80° V ±65°	H ±85° V ±70° -80°	HV ±80°	H ±85° V ±85°
Contrast ratio	600:1	500:1	600:1	500:1	500:1	700:1	700:1
Power cons.	14.5W	17.5W	16.5W	30W	32W	50W	34W
Weight	1275 grams	1680 grams	1600 grams	2650 grams	3500 grams	4850 grams	4300 grams
WFM	1 line, 12 Lines, All lines, Sweep, Parade YRGB, RGB, GBR YCrCb						
Vectorscope	•						
Histogram	•						
LOG mode	LogC, LogF, Panalog						
Time-Code	•						
Emb. audio monit.	•						
i/ Lenses	•						
Voltage monitoring	•						
Overexposure control	•						
Frame-line generator	3 frames + 1 cross						
Tally	Tri-color Tally						
Horizon	Optional / Horizon movable on the display						

About the CineMonitor^{HD} classic

The CineMonitor^{HD} classic is the simplified version of the CineMonitor^{HD} evolution. No compromise for the picture quality, same resolution, but less functionalities and basic features for the tools.

- Simplified Waveform, Histogram and Vectorscope
- Frameline generator (3 frames)
- Overexposure control
- Tally on screen
- Optional horizon (excepted on the basic CineMonitorHD⁶)



Herve Colosio - FR3



Chris Fawcett



Valentin Monge

CineMonitor^{HD} classic

This 6" monitor is the first step into the CineMonitor^{HD} family. The highest picture quality at a reasonable price, perfect for schools or students.



Ordering Codes

- 917TS0016 CineMonitor^{HD}
- 917TS0031 CineMonitor^{HD} SBL
- 917TS0018 HD/SD Virtual Horizon (SBL only)
- 918TS0135 Sun & Night Hood
- 918TS0158 Sun & Night Hood with extension
- 918TS0161 Light Hood with 6 Pin M4
- 918TS0136 Raincover
- 918TS0137A Battery Back (Standard V-Lock)
- 918TS0137V Battery Back (Anton-Bauer)
- 918TS0151 Carbon Handle
- 918TS0127 Slide Ass'y with 1/4-20 nut



CineMonitor^{HD} SBL classic

Thanks to its SuperBright LED backlight this 6" monitor features a brightness of 1000 Nits without compromise with the backs. It will be the perfect companion for body-rig applications.

1000Nits



CineMonitor^{HD} classic

With wide color gamuts and viewing angle, this 8" monitor is the best choice for studio use.



Ordering Codes

- 917TS0017 CineMonitor^{HD}
- 917TS0018 HD/SD Virtual Horizon
- 918TS0150 Light Hood with 6 Pin M4
- 918TS0142 Sun & Night Hood
- 918TS0159 Sun & Night Hood with extension
- 918TS0136 Raincover
- 918TS0137V Battery Back (Standard V-Lock)
- 918TS0137A Battery Back (Anton-Bauer)
- 918TS0151 Carbon Handle
- 918TS0127 Slide Ass'y with 1/4-20 nut
- 918TS0184 19" rack mount for 2 8" monitors



2 CineMonitor^{HD} mounted in the optional 19" frame. Ideal combination for Video Cart or OB Vans.

CineMonitor^{HD} I^O SB classic

Thanks to its SuperBright backlight this 10" monitor features a brightness of 1000 Nits without compromise with the backs.



Ordering Codes

- 917TS0044 CineMonitor^{HD} I^O SB
- 917TS0033 CineMonitor^{HD} I² SB
- 917TS0018 HD/SD Virtual Horizon
- 918TS0151 Carbon Handle
- 918TS0127 Slide Ass'y with 1/4-20 nut

CineMonitor^{HD} I² classic

Thanks to its SuperBright backlight this 12" monitor features a brightness of 1000 Nits without compromise with the backs.



CineMonitor^{HD} 15^{SB} classic

The CineMonitor^{HD} 15^{SB} is a SuperBright model. It delivers an outstanding performance in full sun with a brightness of **1200 Nits**, yet its power consumption is only 50W.

The CineMonitor^{HD} 15^{SB} comes with a battery socket (V-Lock as standard, Anton-Bauer upon request) and can be accessorized with carbon handles or U-Shape holder for C-stand set-up.



1200Nits

Ordering Codes

- 917TS0030 CineMonitor^{HD} 15^{SB}
- 917TS0018 HD/SD VirtualHorizon
- 918TS0127 Slide Ass'y with 1/4-20 nut
- 918TS0151 Carbon Handle
- 918TS0185 19" rackmount for 15" monitor



CineMonitor^{HD} Classic Comparison Chart

	6	6 SBL	8	10 SB	12 SB	15 SB
Pixels	Picture zone 1024 x 560					
Brightness / Nits	350	1000	450	1000	1000	1200
Viewing angle	H $\pm 65^\circ$ V $+65^\circ - 50^\circ$	H $\pm 80^\circ$ V $+60^\circ - 80^\circ$	H $\pm 85^\circ$ V $\pm 85^\circ$	H $\pm 80^\circ$ V $\pm 65^\circ$	H $\pm 85^\circ$ V $+70^\circ - 80^\circ$	H $\pm 75^\circ$ V $+50^\circ - 60^\circ$
Contrast ratio	500:1	600:1	500:1	500:1	500:1	650:1
Power cons.	14.5W	15.5W	17.5W	25W	30W	50W
WFM	1 line, 12 lines, All lines, Parade YRGB					
Vectorscope	•					
Histogram	•					
Overexposure control	•					
Frameline generator	3 frames					
Tally	Red Tally					
Horizon	-	0	0	0	0	0

Transvideo is pioneering the development and integration of monitoring tools for the stereoscopic filmmaker.

The *CineMonitor^{HD}3DView* is a family of monitors dedicated to 3D Stereoscopic HD productions. An extension of the *CineMonitor^{HD}* family, the 3D models are available in 6", 10", 12" and 15". These 3D monitors include all the functions and tools of their 2D counterparts plus the 3D Tool set. They can also be used for regular 2D HD productions.

The *CineMonitor^{HD}3DView* feature specific display modes to evaluate the stereoscopic convergences and cameras correlation. Two **ANAGLYPH** modes as well as an optional **shutter-glasses interface** allow the previewing of 3D images. Each camera/eye can also be monitored independently. A fringe mode assists in evaluating the depth of the 3D effect and its position relative to the convergence plane. The adjustable vertical grid helps setting up infinity separation.

The measurement tools (Waveform and Histogram) display the 2 signals analysis superimposed.

The optional Virtual Horizon provides easy monitoring of this axis when shooting stereoscopic pictures.



A specific manual written by Alain Derobe, AFC, Stereo-Consultant, describing theory and basics of 3D-Stereographic shooting with the *CineMonitor^{HD}3DView* comes with each monitor.

Ordering Codes

- 917TS0034 6" *CineMonitor^{HD}6^{3DView}*
- 917TS0045 10" *CineMonitor^{HD}10^{3DView}*
- 917TS0038 12" *CineMonitor^{HD}12^{3DView}*
- 917TS0039 15" *CineMonitor^{HD}15^{3DView}*
- 917TS0042 Shutter glasses kit
- 918TS0171 Spare shutter glasses
- 918TS0174 Anaglyph glasses Red Cyan
- 918TS0175 Anaglyph glasses Green Magenta
- 917TS0018 HD/SD Virtual Horizon

Specifications

Modes	Color with shutter glasses Anaglyph Red/Cyan Anaglyph Green/Magenta Monochrome fringes
Supported formats	HD SDI 720p 24 to 60 ips 1080p 23.98 to 30 ips 1080i 29.97 to 60 ips 1080psf 23.98 & 24 ips



Wim Wenders

To use the 3D mode, the 2 signals must be synchronised.

CineMonitor 4D 3DView

6", 12"
15"

4:3
16:9
2.35:1

Real
Frame
Rate™

Latency
<1Frame

Auto
Reverse+
H&V Flips

ZOOM

Blue
Check



3DView

Specific Accessories & Options

D56 - D65
Manual color
calibration

technology
super



Shutter Glasses



Alister Chapman
Stereographer

Adjustable
Gamma



TALLY

Safe area
markers

Waveform
Vectorscope
Histogram

Exposure
Monitoring

Color
Framelines
+Matting

Virtual
Horizon

3D
TOOLS

CineMonitor^{4D} 3DView evolution

The CineMonitor^{4D} 3DView is a small size field monitor featuring wide viewing angle and wide color gamut.

Featuring all tools and an optional horizon, this monitor is perfect to use directly on the rig or the body-riq.

As all 3DView evolution it becomes a SuperBright monitor when used in 2D Mode.



© Copyright P+S TECHNIK, Munich



Ordering Codes

- 917TS0062 CineMonitor^{4D} 3DView Evo
- 917TS0018 HD/SD Virtual Horizon
- 918TS0135 Sun & Night Hood
- 918TS0158 Sun & Night Hood with extension
- 918TS0161 Light Hood with 6 Pin M4
- 918TS0136 Raincover
- 918TS0137-V Battery Back (Standard V-Lock)
- 918TS0137-A Battery Back (Anton-Bauer)
- 918TS0151 Carbon Handle
- 918TS0127 Slide Ass'y with 1/4-20 nut

Specifications

Inputs	2 x HD/SD SDI + 1 Rck out
Contrast ratio	Max 600:1
Viewing angle	±80°H, +60°/-80°V
Brightness	1000 Nits in 2D mode
Dimensions	Depth 58 mm/2.3" Width 195 mm/7.7" Height 160 mm/6.3"
Weight	1380 grams/3.0lbs
Power Cons.	15.5W



Jason GOODMAN - Stereographer

CineMonitor^{HD} 3DView evolution

CineMonitor^{HD} 10 3DView evolution

The CineMonitor^{HD} 10 3DView is a middle size field monitor featuring wide viewing angle and wide color gamut.

Featuring all tools and an optional horizon, this monitor is perfect to use on stage for large productions or handheld with the optional carbon handles or shoulder strap.



Ordering Codes

- 917TS0063 CineMonitor^{HD} 10 3DView Evo
- 917TS0018 HD/SD Virtual Horizon
- 918TS0151 Carbon Handle
- 918TS0127 Slide Ass'y with 1/4-20 nut

Specifications

Inputs	2 x HD/SD SDI + 1 Rck out
Contrast ratio	Max 600:1
Viewing angle	±80°H, ±65°V
Brightness	1000 Nits in 2D mode
Dimensions	Depth 76 mm/3" Width 268 mm/10.5" Height 226 mm/8.89"
Weight	2600 grams/6.39lbs
Power Cons.	25W



Laurent VERDUCI - Stereographer
Céline TRICART - 1st AC

CineMonitor^{HD} I² SB evolution

The CineMonitor^{HD} I² 3DView is a middle size field monitor featuring wide viewing angle and wide color gamut.

Featuring all tools and an optional horizon, this monitor is perfect to use on stage for large productions or handheld with the optional carbon handle or shoulder strap.



Ordering Codes

917TS0064 CineMonitor^{HD} I² SB

917TS0018 HD/SD Virtual Horizon

918TS0151 Carbon Handle

918TS0127 Slide Ass'y with 1/4-20 nut

Specifications

Inputs	2 x HD/SD SDI + 1 Rck out
Contrast ratio	Max 600:1
Viewing angle	±80°H, +60°/-80°V
Brightness	1000 Nits in 2D mode
Dimensions	Depth 70 mm/2.76" Width 297 mm/11.69" Height 255 mm/10.03"
Weight	3660 grams / 8,1 lbs
Power Cons.	30W



CineMonitor^{HD} 3DView evolution

CineMonitor^{HD} 15 3DView

The CineMonitor^{HD} 15 3DView is a new version featuring wide viewing angle and improved color gamut. It is the largest monitor in the 3DView family. Featuring all tools and an optional horizon, this monitor is perfect to use on stage for large productions.



Ordering Codes

- 917TS0065 CineMonitor^{HD} 15 SB
- 917TS0018 HD/SD Virtual Horizon
- 918TS0151 Carbon Handle
- 918TS0127 Slide Ass'y with 1/4-20 nut
- 918TS0XXX 19" rackmount for 15" monitor

Specifications

Inputs	2 x HD/SD SDI + 1 Rck out
Contrast ratio	Max 650:1
Viewing angle	±75°H, +50°/-60°V
Brightness	1000 Nits in 2D mode
Dimensions	Depth 65 mm/2.55" Width 343 mm/13.5" Height 303 mm/11.92"
Weight	4850 grams/10.6lbs
Power Cons.	50W



Kommer Kleijn - "Le Huitième Continent"

CineMonitor^{HD}3DView Classic

The *CineMonitor^{HD}3DView classic* is the basic version of the *3DView* family. Less functionalities than the *evolution* but the same picture quality.

CineMonitor^{HD}6 3DView classic

The line entry of the *3DView* family. This 6" monitor is ideal to be used with light rigs in narrow environment.



CineMonitor^{HD}10 3DView classic

All features of the *3DView classic* in a mid size monitor.



CineMonitor^{HD}12 3DView classic

All features of the *3DView classic* in a mid size monitor.



2010 Soccer world cup - Bayern

Ordering Codes

- 917TS0034 CineMonitor^{HD}6 3DView Classic
- 917TS0045 CineMonitor^{HD}10 3DView Classic
- 917TS0038 CineMonitor^{HD}12 3DView Classic

CineMonitor *HD* 3DView Comparison Chart

	Classic			Evolution			
	6	10	12	6	10	12	15
3D Anaglyph							
3D Monochrome							
3D Color		-			•		
3D B&W		-			•		
3D Shutter Glasses							
3D Single input		-					
Basic infinity grid		•					
Advanced infinity grid		-					
Picture Shift		•					
Function on rotary knob		-					